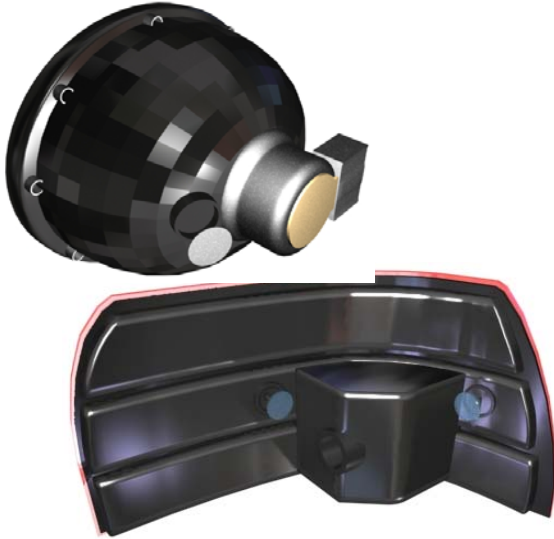


# Application Study

## PLACEMENT OF ADHESIVE MOISTURE VENT



### TASK

Place a vent onto automotive electronic controller housing and external light fixtures (head lamp, tail lamp, fog light),

### CHALLENGES

- The vent must be wetted out according to manufacturer's requirements to avoid failures in the field
- The vent must be placed within a tolerance of up to  $\pm 0.51$  mm, but the housing cannot easily be positioned due to its awkward shape
- Accuracy is essential - otherwise the part will fail - yet the shape of the housing makes accuracy extremely difficult.

### SOLUTION

- Model 1515
- Customized chuck and nest
- Benchtop configuration with finger switches for semi-automatic operation
- Set up dwell time and pressure
- Peel edge stripper assembly
- Rewind Reel

### FEATURES & BENEFITS

- The benchtop version of Model 1515 is a compact, cost-effective solution for accurate, reliable peeling and placing of the vent.
- The customized chuck along with AccuPlace's peeling technology allow for consistent peeling of the adhesive vent as well as for precise placement onto curved, angled, and hard to reach surfaces.
- The programmable dwell time and pressure of up to 75 lb., available as setup options, ensure that the adhesive is activated and the vent will function properly.

