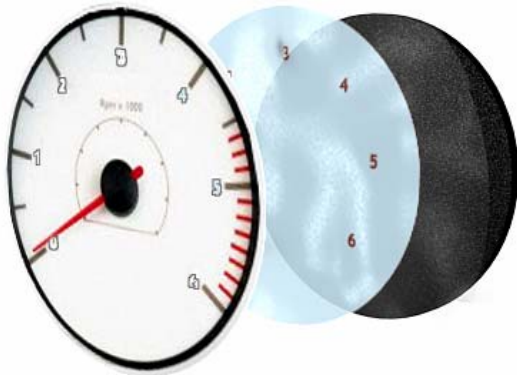


Application Study

PLACEMENT OF AN EL LAMP ADHESIVE



TASK

Apply double-sided adhesive used to affix an automotive display panel's electro-luminescent (EL) lamp.

CHALLENGES

- The machine is required to run multiple lamp and adhesive types.
- The adhesive cannot encroach into the lighted area of the lamp.
- The customer requests a semi-automated cell approach since the machine will be utilized in a low labor cost region.

SOLUTION

- APAC
- 3 Robot Mode RM3065
- Vision system
- Dual tray shuttle
- Vacuum table

FEATURES & BENEFITS

- The dual tray shuttle allows for semi-automated operation. The operator loads/unloads one tray shuttle while the APAC assembles on the other. The only other operator responsibility is changing rolls of adhesive.
- The shuttle is tooled with a vacuum table and locating pins to repeatably position the sheet of EL lamps for assembly.
- The optional vision system ensures an accurate assembly by scanning both the adhesive and lamp prior to placement.
- Additional future EL lamps can be assembled on the same equipment with only tooling changes.

