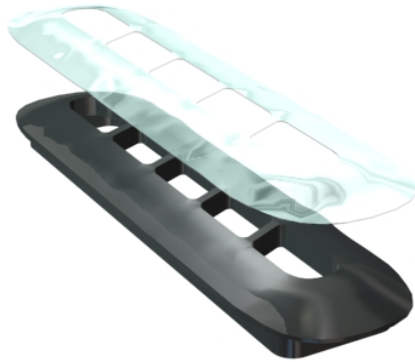


PLACEMENT OF A PROTECTION FOIL ONTO A KEYLESS ENTRY DEVICE



TASK

Assemble a temporary protective film onto the plastic housing of a vehicle's keyless entry device.

CHALLENGES

- The protection film must follow the 3-dimensional contour of the plastic housing.
- The film's function is just for temporary in-house protection so the project is cost sensitive.
- The adhesive is low tack since the film is removed prior to shipment.

SOLUTION

- Model 3065
- Bench top configuration for semi-automatic operation
- Customized low durometer chuck
- Customized nest

FEATURES & BENEFITS

- The customized low durometer chuck conforms the mask to the plastic housing and ensures complete adhesion.
- The bench top platform consisting of a base with feet, built-in power supply, and 2-hand control provides a simple cost-effective solution that captures the quality benefits of automation.

