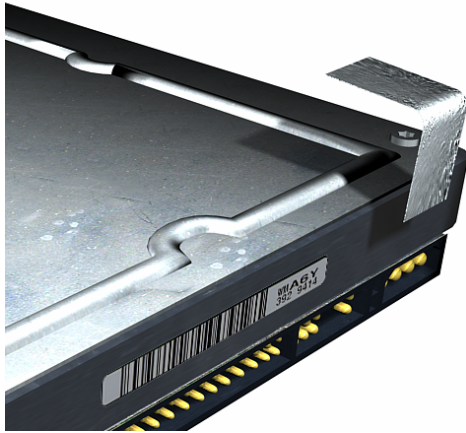


# Application Study

## PLACEMENT OF TAMPER-PROOF SEAL ON A DISK DRIVE



### TASK

Assemble a tamper-proof label in two dimensions onto a hard disk drive.

### CHALLENGES

- The seal's functionality mandates it first be placed onto the cover plate horizontally and then subsequently rolled 90 degrees down the side of the disk drive.
- The assembly of the tamper-proof seal is part of a multi step automated system in a clean room.

### SOLUTION

- Model 3065 - clean room compatible
- Customized profiling chuck
- Rewind reel
- Tape low sensor

### FEATURES & BENEFITS

- AccuPlace patented peeling technology allows consistent peeling of the aggressive adhesive.
- After peeling the customized profiling chuck applies the seal to the top of the drive. A roller integrated into the chuck extends and wraps the seal 90 degrees down the side of the drive.
- The clean room version 3065 incorporates air valve exhaust ports connected together for porting to an outside vacuum system. Pneumatic cylinders have vacuum collars around the shafts, and bearings are constructed of stainless steel.
- The machine's compact footprint and simple communication interface make it easy to integrate into the automated production process.
- The tape low sensor communicates to the host controller adhesive component roll status.

