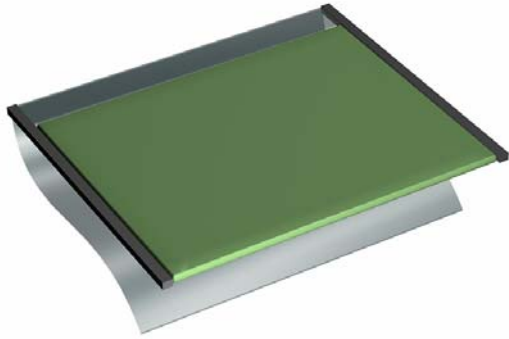


Application Study

PLACEMENT OF A LCD LIGHTGUIDE REFLECTIVE FOIL



TASK

Assemble reflective foil onto the liquid crystal display (LCD) of mobile phones.

CHALLENGE

- Placement of the foil must be absolutely bubble-free as the display quality depends on it.
- The foil surface can be rather large, corresponding to the display sizes.
- Both the foil and liner are made of clear material; distinguishing one from the other is difficult.
- The manufacturing location is in a low-tech region with minimal automation expertise.

SOLUTION

- Model 3065
- Customized nest
- Customized bubble-free chuck
- Benchtop configuration for semi-automatic operation
- Dual rewind reel
- Nickel peel plate kit
- X-axis correction option

FEATURES & BENEFITS

- The customized chuck along with AccuPlace's peeling technology allow for consistent peeling and bubble-free placing of the reflection foil.
- The bench top platform consisting of a base with feet, built-in power supply, and 2-hand control provides a simple cost-effective solution that captures the benefits of automation in a low-tech region.
- The nickel peel plate kit enhances the ability of the machine's sensor to detect the edge of the foil on the liner.
- The x-axis correction option ensures an accurate placing of the light guide onto the lens and correction of any possible component drift on the liner.

