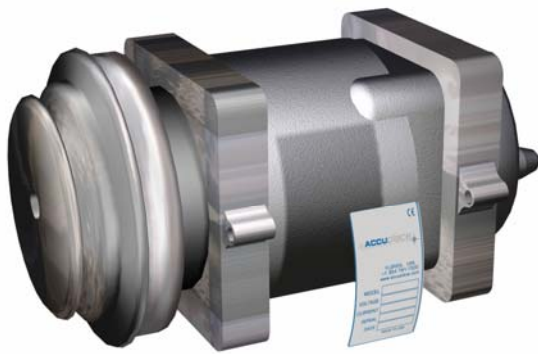


Application Study

PLACEMENT OF AN AIR COMPRESSOR LABEL



TASK

Assemble an adhesive label onto an automotive compressor.

CHALLENGES

- The label has extremely aggressive and strong adhesive to prevent removal.
- A cycle time of just three seconds is desired.
- The labeling operation is part of a multi-step automated process.

SOLUTION

- Model RM3065
- Rewind reel

FEATURES & BENEFITS

- AccuPlace's peeling technology allows for consistent peeling of the label.
- The RM3065 foot print and easy interface make it ideal for integration into an automated system.
- The cycle time objective is easily obtained as the machine feeds labels concurrently with the placement.

