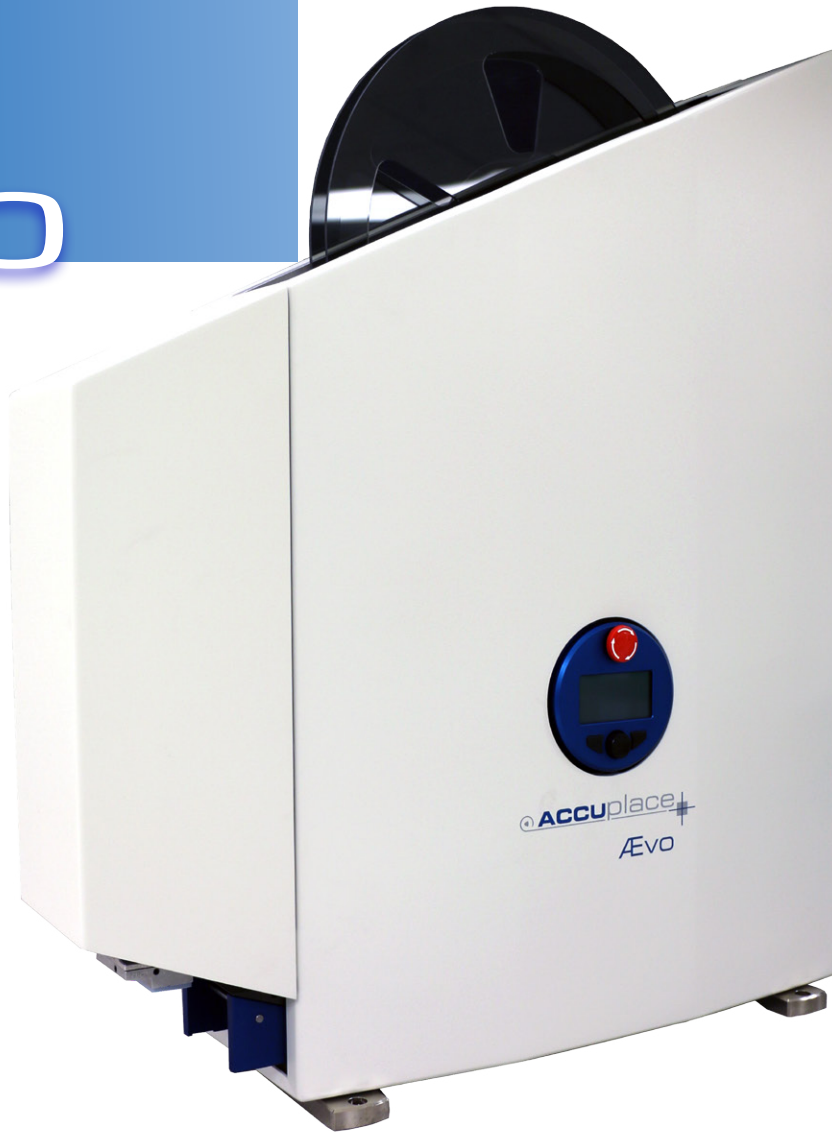


Ævo



Capacity

2.0" x 2.0"

5.1 cm x 5.1 cm

The **Ævo** is a new generation of film adhesive placement technology with a print & apply option, that elevates state-of-the-art to a whole new level. This is the most accurate model available of 2.0"x2.0" / 5.1 cm x 5.1 cm.

The machine has a compact footprint and offers a wide range of features and options that allow for optimal adaption of the component's specific requirements. Various placement actuator options enable placement of a component in any orientation. With full serial control communications and an intuitive interface, the **Ævo** is the fastest, easiest to use, adhesive component placement machine of its kind.

Configurations

Like most of AccuPlace's products, **Ævo** can be configured in one of three ways, OP1, OP2, OP3. For more information on how the **Ævo** can be configured, log onto accuplace.com or call (954) 791-1500 to speak to one of our engineers.



The recognized leader in adhesive component placement technology

AEVO

AccuPlace Headquarters
1800 NW 69th Avenue
Plantation, FL 33313
Phone: +1 954 791 1500
Fax: +1 954 791 1501
Email: sales@accuplace.com

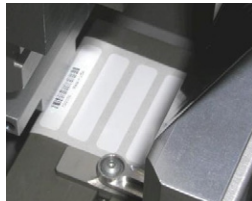
AccuPlace Pte. Ltd. Tech Center Singapore
90 Cecil Street #10-02
Singapore 069531
Phone: +65 9846 1907
Fax: +65 6483 3156

Features

- Web based (TCP/IP) machine interface allows highly advanced and intuitive machine parameter setup
- AccuPlace's proven Pick'n'Peel™ process for ultimate accuracy and process reliability
- Minimal mechanical adjustments ensure easy setup and component changeover
- Rollerless drive technology means higher accuracy, lower maintenance, and longer life
- No tools required for routine maintenance
- Advanced clean room options for ultra-clean environments
- Simple material threading ensures quick roll replacements
- High precision construction for last quality.

Print & Apply

- Zero-queue printing for serialized printing
- 300 dpi or 600 dpi available
- Very compact design of printer, integrated in applicator
- High print quality even on smallest labels
- Economic in material consumption
- Barcode scanner for print verification can be integrated



Operation Cycle

All AccuPlace models have a unique patented peeling technology in common that ensures high placement accuracy and repeatability, even for parts that are difficult to peel. Our extensive experience in the design and manufacturing of vacuum chucks guarantees optimal functionality of any application.

1. As the liner is pulled by a stepper motor through its path in the machine, the position sensor looks for a component on the liner. This ensures positioning of the component exactly underneath the vacuum chuck.
2. The placement actuator with its customized vacuum chuck extends to grip the component.
3. The drive assembly retracts, pulling the liner around the peel edge and removing the liner from the retained component.
4. The placement actuator places the component into the fixtured target part. When the actuator returns into its original position, the peel edge is extended again and the cycle starts from the beginning.

Specifications

Printing Registration Accuracy	± 0.002"/0.05 mm*
Size:	
Depth	571 mm (22.48")
Height	809mm (31.86) (incl. stack indicator)
Width	180mm (7.09")
Weight	65 lbs/29.5 kg (including printer)
Input Voltage	100-240 VZC 50-60Hz 1ø
Current	4A@220V or 8A@115V
Capacity(Label or Component size)	Max 50mm x 50mm x 5 mm thick / 2"x2"x.02" LxWxH
Label Roll Capacity	ø430mm (17") x 60mm (2.36")
Label Roll Core Size	ø76mm (3") or ø152.4mm (6")
Air Pressure Requirement	75 psi/5 bar
Printing Thermal Media Capacity	ø.69.85mm (2.75")x60mm (2.36") max. 20mm (0.78") min., core ø 25.4 (1")
Assembly Pressure	35 lbs/153 N max (adjustable)
Speed	1.5 sec. typical peel & place 2-5 sec. Typical print, peel & place
Clean Room Printing	Possible, requires the correct choice or label stock, ribbon, and core
Barcode Verification	Scanner inteS-232 Serial Control
Ribbon	Wound out thermal transfer ribbon
Print Quality	300 dpi & 600 dpi
Life Time Print Head	1.0x108 pixel cycles. (For a 300 dpi print head, the lifetime is 333.3" of print length)