

RM Ævo

Capacity

4.0" x 6.5"

10.16 cm x 16.5 cm



The RM Ævo is a new generation of label and film adhesive feeding technology with a print & apply option that elevates state-of-the-art to a whole new level. This is the most accurate model available of 2.0"x2.0" /5.1 cm x 5.1 cm.

The logo consists of the word 'ACCUpLace' in a blue sans-serif font, followed by a plus sign. A horizontal line extends from the end of the word, and a vertical line extends from the plus sign, forming a crosshair.

The recognized leader in adhesive component placement technology

AccuPlace Headquarters
 1800 NW 69th Avenue
 Plantation, FL 33313
 Phone: +1 954 791 1500
 Fax: +1 954 791 1501
 Email: sales@accuplace.com

AccuPlace Pte. Ltd. Tech Center Singapore
 90 Cecil Street #10-02
 Singapore 069531
 Phone: +65 9846 1907
 Fax: +65 6483 3156

RM AEvO

Features

- Web based (TCP/IP) machine interface allows highly advanced and intuitive machine parameter setup
- AccuPlace's proven Pick'n'Peel™ process for ultimate accuracy and process reliability
- Minimal mechanical adjustments ensure easy setup and component changeover
- Rollerless drive technology means higher accuracy, lower maintenance, and longer life
- No tools required for routine maintenance
- Advanced clean room options for ultra-clean environments
- Simple material threading ensures quick roll replacements
- High precision construction for lasting quality

Print & Apply

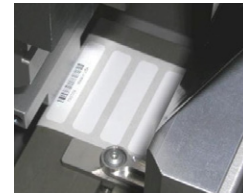
- Zero-queue printing for serialized printing
- 300 dpi or 600 dpi available
- Very compact design of printer, integrated in applicator
- High print quality even on smallest labels
- Economic in material consumption
- Barcode scanner for print verification can be integrated

Why RM?

AccuPlace robot mode RM1515 is an adhesive component feeding system for components up to 2" x 6.5" utilizing a robot to perform the placement.

A robot mode is used:

- Where tolerances mandate the use of cameras for assembly
- Where high speed automation necessitates the use of cam-operated pick-and-place devices
- Where multiple placement locations and/or orientations are involved
- Where problematic placement locations require complex actuation mechanisms.



Specifications

Printing Registration Accuracy	± 0.002"/0.05 mm*
Size:	
Depth	528 mm (20.79")
Height	809mm (31.86) (incl. stack indicator)
Width	180mm (7.09")
Weight	63 lbs/28.5 kg (including printer)
Input Voltage	100-240 VZC 50-60Hz 1ø
Current	4A@220V or 8A@115V
Capacity(Label or Component size)	Max 50mm x 50mm x 5 mm thick / 2"x2"x.02" LxWxH
Label Roll Capacity	ø 430mm (17") x 60mm (2.36")Liner Width
Label Roll Core Size	ø 76mm (3") or ø152.4mm (6")
Air Pressure Requirement	75 psi/5 bar
Printing Thermal Media Capacity	ø .69.85mm (2.75")x60mm (2.36") max. 20mm (0.78") min., core ø 25.4 (1")
Assembly Pressure	35 lbs/153 N max (adjustable)
Speed	1.5 sec. typical peel & place 2-5 sec. Typical print, peel & place
Clean Room Printing	Possible, requires the correct choice or label stock, ribbon, and core
Barcode Verification	Scanner inteS-232 Serial Control
Ribbon	Wound out thermal transfer ribbon
Print Quality	300 dpi & 600 dpi
Life Time Print Head	1.0x108 pixel cycles. (For a 300 dpi print head, the lifetime is 333.3" of print length)

*Component department. AccuPlace will evaluate your application upon receiving your parts and specifications.